

Spherical Lifeboat Compass Boots-Kugelkompass IOTA



Bracket Mounting **IOTA/2** Bügelmontage



Binnacle Mounting **IOTA/B** Aufbau



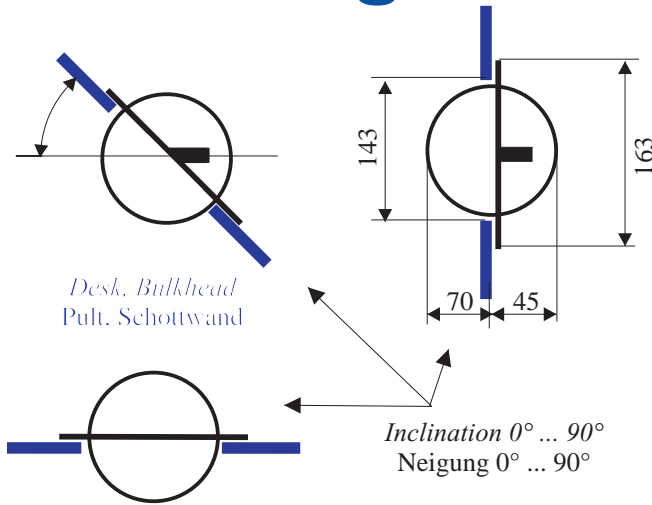
Bulkhead Mounting **IOTA/1** Einbau Schottwand



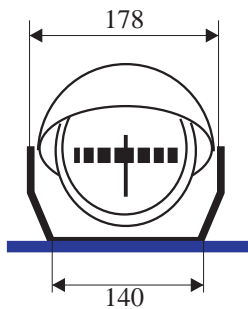
Desk Mounting **IOTA/1** Pult Einbau

Spherical Lifeboat Compass

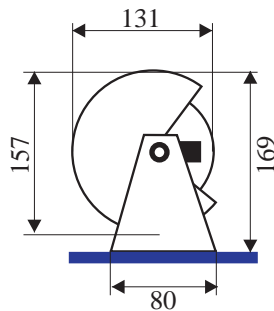
Boots-Kugelkompass



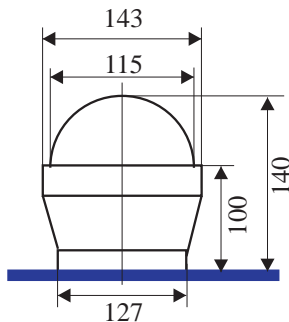
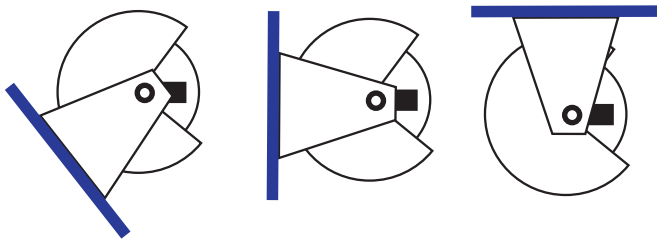
IOTA/1



IOTA/2



Desk, Deck
Pult. Schottwand



Desk, Deck
Pult. Schottwand

IOTA/B

Specification

- Fully gimballed
- Extra internal bowl for shock and vibration resistance
- Temperature range -30°... +60°C
- Illumination 12 or 24 VDC
- Seawater resistant coated brass bowl
- Polished mineral glass dome

Merkmale

- Vollkardanisch gelagert
- Schock- und vibrationsfest durch extra Innenkessel
- Temperaturstabil -30°C ... +60°C
- Beleuchtung 12 oder 24 VDC
- Seewasserbeständig lackiertes Messinggehäuse
- Polierte Mineralglas Glocke

Approvals

European MED type approval certificate according to ISO25862 for lifeboats

Zulassungen

Accessories

- Base plate with B+C-correctors only for IOTA/2. Black. No. 37210s
- Base plate with quick lock only for IOTA/2. Black. No. 37211s
- B+C-corrector for IOTA/1. No. 18150

Zubehör

- Decksplatte mit B+C-Kompensierung nur für IOTA/2. Schwarz. Nr. 37210s
- Decksplatte mit Schnellverschluß nur für IOTA/2. Schwarz. Nr. 37211s
- B+C-Kompensierung für IOTA/1. Nr. 18150

Order Numbers

- IOTA/1 - Built-in type. White. No. 37206b
- IOTA/2 - Set-up type. Black. No. 37207b
- IOTA/B - Binnacle Type. Black. No. 37209b

Bestell Nummern

- IOTA/1 - Schotteinbau. Weiß. Nr. 37206b
- IOTA/2 - Bügelmontage. Schwarz. Nr. 37207b
- IOTA/B - Aufbau. Schwarz. Nr. 37209b

Technical Data

Magnetic moment Magnet. Moment	0.7 Am ²
Period Schwingungsdauer	9.5 sec
Swirl error Schleppfehler	<2.0°
Damping Dämpfung	3.8
Magnetic system Magnetsystem	Ring
Apparent card-Ø Scheinb. Rosen-Ø	100 mm

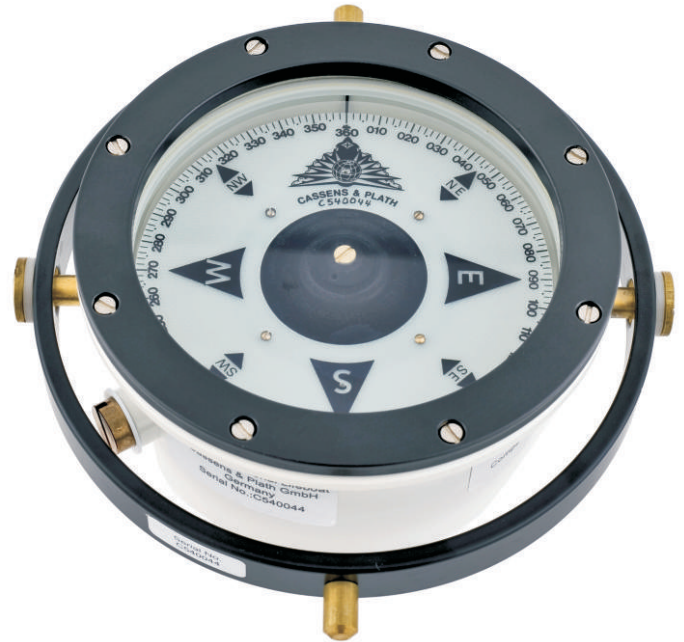
Technische Daten

Real card-Ø Wahrer Rosen-Ø	80 mm
Friction error Reibungsfehler	< 0.5°
Directional error Richtungsfehler	< 0.5°
Pitching tolerance Stampffreiheit	+/- 180°
Rolling tolerance Rollfreiheit	+/- 180°
Weight IOTA/1(2) Gew. IOTA/1(2)	2.0 (2.5) kg

Lifeboat Compass TYPE/51 Bootskompass



Lifeboat compass Type/51-MED



Lifeboat compass Type/51-International

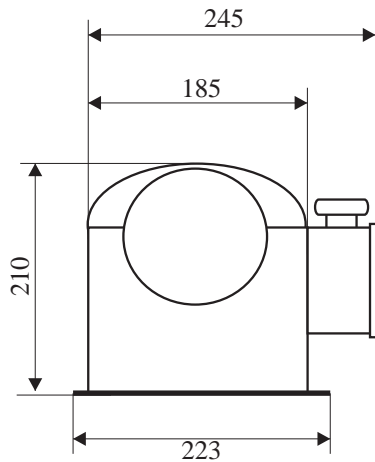
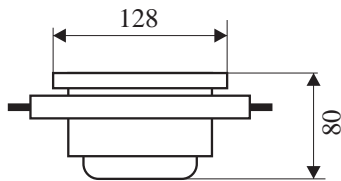
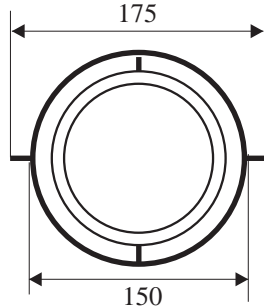


Wooden Storage Box
Holz-Aufbewahrungskasten



Binnacle with oil lamp
Boots-Häuschen mit Öl-Lampe

Lifeboat Compass **TYPE/51** Bootskompass



Traditional flat top lifeboat compass. With 5° card division according to MED approval. With 2° division for international use.

Traditioneller Rettungsboot Kompass. Mit 5° Rosenteilung nach MED Zulassung. Mit 2° Teilung für internationalen Einsatz.

Specification

- Meets ISO25862 specification
- Externally gimballed, therefore in binnacle +/-180° rolling and pitching tolerance
- Temperature stabilized -30° C ... +60° C
- Two lubber lines, one ahead and one across

Merkmale

- Entspricht ISO25862
- Außenkardanisch gelagert, somit +/-180° Krängungs- und Stampffreiheit
- Temperaturstabil -30° C ... +60° C
- Zwei Steuerstriche: einen längs und einen quer

Order Numbers

- Type/5-MED. No. 34000
- Type/51-International. No. 340001
- Compass binnacle. No. 10741
- Wooden storage box with sliding cover and compass bearings. No. 20556

Bestell Nummern

- Type/51-MED. Nr. 34000
- Type/51-International. Nr. 340001
- Kompasshäuschen. Nr. 10741
- Holz-Aufbewahrungskasten mit Schiebedeckel und Kompasslager. Nr. 20556

Approvals

European MED type approval certificate according to ISO25862 only for Type/51-MED, order No. 34000

Zulassungen

Technical Data / Technische Daten

Magnetic moment Magnet. Moment	0.70 Am ²	Friction error Reibungsfehler	< 0.5°
Period Schwingungsdauer	10 sec	Directional error Richtungsfehler	< 0.5°
Swirl error Schleppfehler	<2.0°	Pitching tolerance Stampffreiheit	+/- 10°
Magnetic system Magnetsystem	Ring	Rolling tolerance Rollfreiheit	+/- 10°
Card-Ø Rosen-Ø	100 mm	Weight Gewicht	2.0 kg